



# POWERED BY OPEN HOTEL



## PROPERTY MANAGEMENT

A system that aligns with your unique needs and simplifies your processes. Finally, freedom to focus on your guests.



## CHANNEL MANAGEMENT

A true Channel Manager connect for rates and seamless with the PMS. Truly manage your OTA's from your PMS.



## YIELD MANAGEMENT

A powerful tool that increases ADR and Occupancy, while reducing commissions and saving time adjusting rates and inventory.



## ENTERPRISE MANAGEMENT

A toolset for multiproperty owners, management companies, and brands. Easy property segmentation for rate and channel management as well as reporting.



## GATEWAY MANAGEMENT

Effortlessly access and manage points, swiftly post charges, and stay in tune with player status, all in one integrated platform.



# PROPERTY TECHNOLOGY SOLUTIONS



**Flexible, Effective Groups:** Easily customize group bookings with flexible hold and rate scenarios. Use a special code or generate a dedicated landing page for your groups on OpenHotel Booking Engine.



**Proprietary Rate System:** Effortlessly handle complex rate scenarios with ease. Enjoy multiple discount types, promo codes, flexible length-of-stay enforcement, and strong support for surcharges and taxes. Customize your deposit based on the rate period.



**Dynamic Reporting:** Compare, project, and track with customizable comparison and pace reports. Access all key metrics conveniently in one place. Generate tailored reports with numerous filters to obtain the necessary data. Identify trends effortlessly with visually captivating graphs and charts.



**In-System Payment Processing:** A seamless interface paired with OpenHotel's flexible payment provider options makes whatever setup best fits your hotel easy to execute in the PMS.



**Packages, Options and Addons:** Enhance guest experience with personalized stays and seamless fulfillment. Control availability, set up alerts for vendors and staff, and showcase enticing options with captivating visuals and descriptions on the booking engine.



**Housekeeping and Maintenance:** Multiple options for housekeeping reports to suit your hotel. Easily manage housekeeping and maintenance requests and holds for repairs and updates.



**Departments and Security:** Enjoy extensive customization options for staff access, granting control over their permitted functions and track their activity. Additionally, rest assured with Two Factor Authentication securing each account.



**Automated Guest Engagement:** Effortlessly generate welcome emails, conduct post-arrival check-ins, request reviews after checkout, and offer direct booking promotions tailored to booking time, check-in, and checkout.

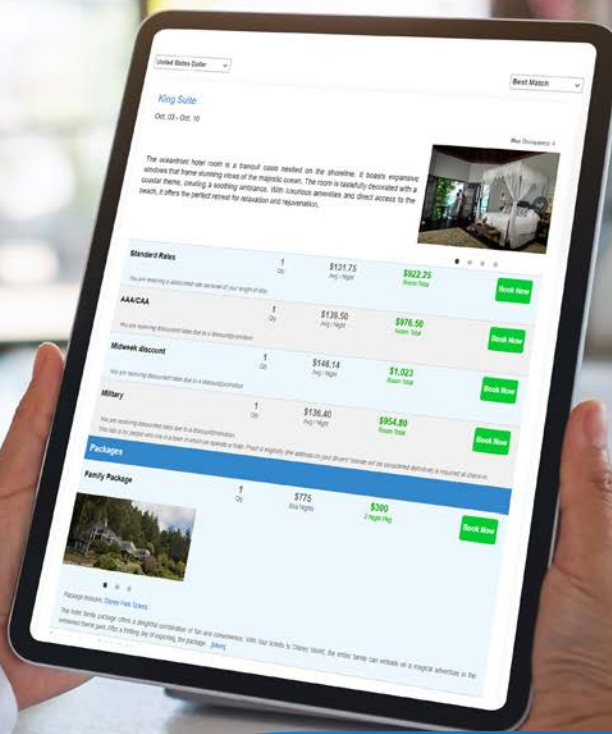


**Express Checkin:** Cut down on wait times by allowing guests to complete registration form and upload identification by email.



**Intuitive and Multifunctional Dashboard:** Effortlessly perform common tasks directly from the reservation grid. Update room status, add requests, make reservations, place maintenance and temporary holds, modify rooms, and more with ease.

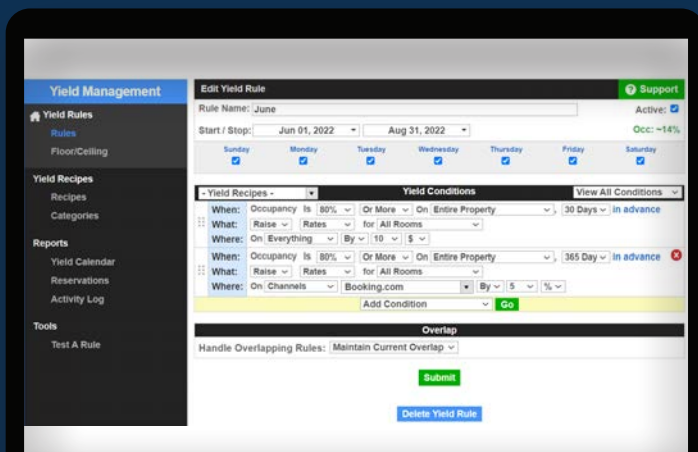




# PROPERTY MANAGEMENT SYSTEM

## GATEWAY

Elevate your hotel's gaming and rewards experience with the SkyWire Gaming Gateway – a sophisticated solution that seamlessly bridges your Property Management System (PMS) with your players or rewards club. Effortlessly access and manage points, swiftly post charges, and stay in tune with player status, all in one integrated platform.





# PROPERTY MANAGEMENT SYSTEM

## CHANNEL MANAGER

A robust Channel Manager developed within the PMS for the most seamless operation of rates and inventory everywhere. With a full content API to the major channels you can manage specials, guest reviews, and more without going to the portal.

